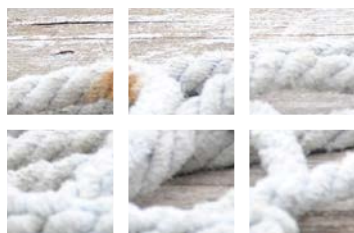




Guidance for operators of recreational craft

Kiel Canal



Dear recreational craft operators,

you want to navigate the Kiel Canal with as few problems as possible, safely and in close contact with professional shipping. You are therefore requested to observe the very important points listed here.

Traffic on the Kiel Canal is governed by the Traffic Regulations for Navigable Maritime Waterways with the associated notices issued by the Northern Region Office of the Federal Waterways and Shipping Administration.

Recreational craft (vessels operated non-commercially and used exclusively for sporting and recreation purposes) may use the Kiel Canal and its approaches for passage and without pilots only during daylight hours and not when visibility is reduced.

Recreational craft must organize their navigation of the canal such that they can reach a berth intended for use by recreational craft before the end of daylight hours. This does not apply to craft making for the approved berths in Kiel-Holtenau lock approach and Brunsbüttel inland port or to craft locking out to the Elbe after notifying the lock master.

You can contact the lockmaster by phone ...

Kiel: +49 431 3603-152

Brunsbüttel: +49 4852 885-252

... or on VHF Channel 13 and 12. The VTS is operating an VHF Channel 2 and 3. The channels are to be listened to during the journey! Radio discipline must be observed.

VHF channel 13 (call: Kiel Canal I)	Brunsbüttel lock area
VHF channel 2 (call: Kiel Canal II)	Brunsbüttel – Breiholz reach
VHF channel 3 (call: Kiel Canal III)	Breiholz – Kiel-Holtenau reach
VHF channel 12 (call: Kiel Canal IV)	Kiel-Holtenau lock area



Behaviour in the lock approaches and locks

Watch out for backwash when passing moored vessels. Smoking and naked flames are prohibited in the lock area. Listen for public address announcements.

Keep to the right



On the Kiel Canal, you must keep as far to the right as possible. On certain sections, the minimum distance to be kept from the bank is indicated by signs. Because of the sloping embankments, the indicated minimum distance from the bank must be kept.

Maximum speed

The maximum speed of 12 km/h over the ground must not be exceeded.

Ferry crossings and professional shipping



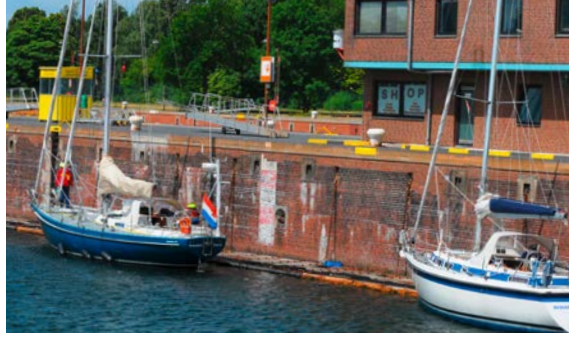
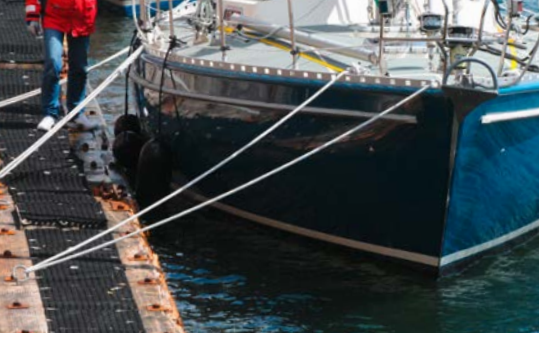
Particular attention must be paid when passing ferry crossings (cross current) and oncoming ships because of the suction.

Sailing on the Kiel Canal

Sailing is prohibited on the Kiel Canal.

This does not apply:

- in the approach to the Old Locks in Kiel-Holtenu; and
- outside the navigation channel on Lakes Borgstedt, Audorf and Flemhude.

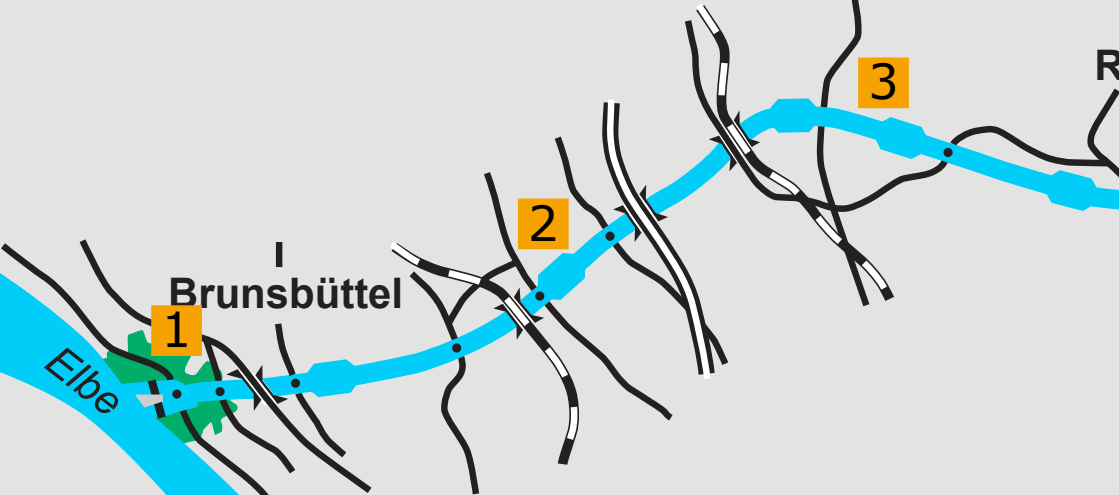


Powered recreational craft may additionally set sails. They must then display a black cone – point down – forward. Water skiing, jetbiking, windsurfing and stand up paddling are prohibited on the Kiel Canal. A powered recreational craft may only tow one recreational craft, and the length of the towed recreational craft must not exceed 15 metres. The minimum speed of the towed convoy must be 9 kilometres (4.9 nautical miles) per hour.

Behaviour in fog

Recreational craft are not allowed to transit the canal during restricted visibility. In case the visibility is suddenly reduced it is allowed to make fast behind the dolphins at the next siding or at the next available berth.



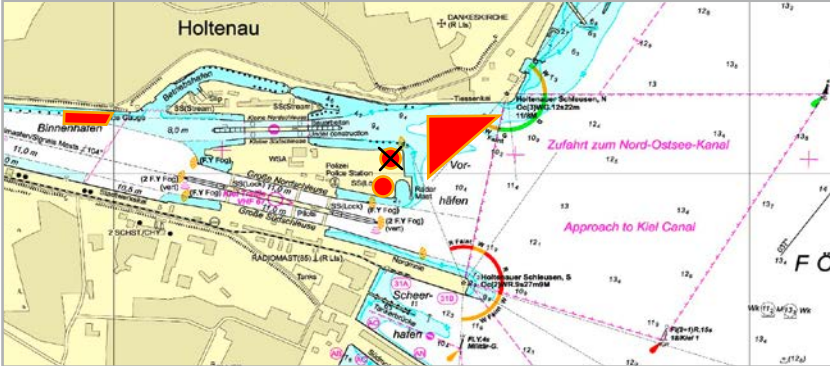
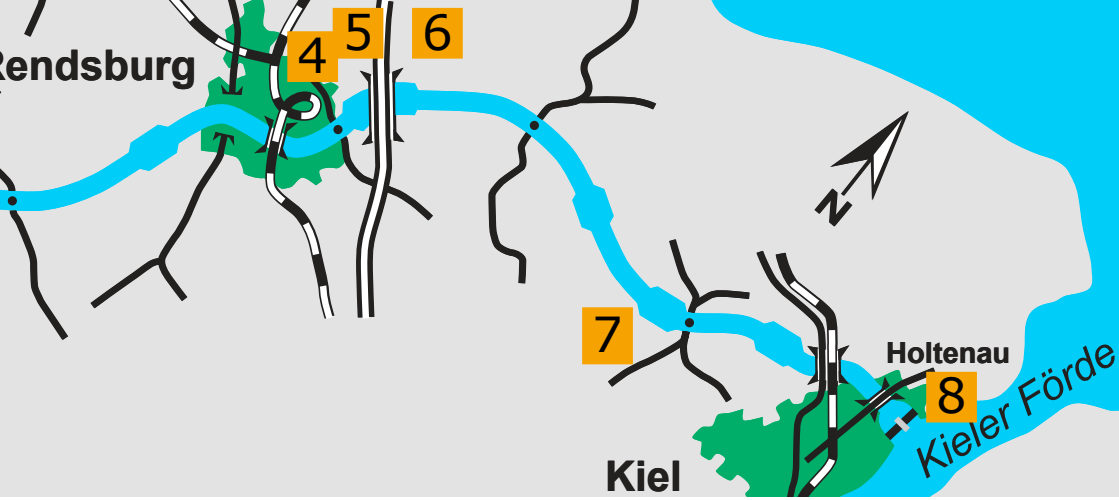


Recreational craft may only moor at the following berths:

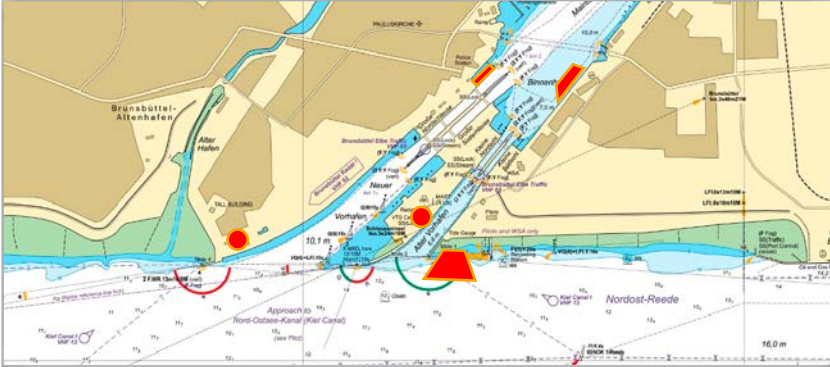
1. Brunsbüttel recreational craft berth (north side, km 1.8, behind the fender piles) – fees apply
2. Berth in the turning area of Dückerswisch siding – north side (km 20.7), max. draught 2.40 m
3. Berth before Gieselau lock – (entrance at km 40.5), max. draught 2.40 m
4. Berths in Lake Obereider with narrows (entrance at km 66)
5. Berth in Lake Borgstedt (entrance at km 67.5)
6. Berths in Lake Borgstedt (entrance at km 70, bridge middle section, Lake Borgstedt: Height = 22.50 m above water level)
7. Recreational craft roadstead in Lake Flemhude (entrance at km 85.4)
8. Berth in Kiel-Holtenau (km 98.5), east of the lock; fee required (transit fees payable at the pay machine)

Note on 2, 3 and 7: berths may be used for one night only

	Gieselau Canal	Achterwehr Canal (Strohbrück lock closed)
Length overall	65.00 m	35.00 m
Maximum width	9.00 m	7.50 m
Draught	2.40 m	





▭ Standby area for recreational craft
 ● Approaches zone signals




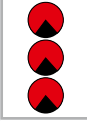

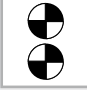
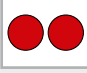
▭ Standby area for recreational craft
 ● Approaches zone signals

Light signals

Entering the approaches to the Kiel Canal, the lock approaches and locks

Signal		Meaning	Where can it be seen?
One interrupted white light		Entry permitted into the approach	On the signal masts on the lock islands (jetty 4 in Brunsbüttel)
One interrupted white light		Entry permitted into the lock approaches and locks	On the signal masts on the central wall of the lock
Waiting area: Brunsbüttel – east of the approach boundary Kiel-Holtenau – north of the approach boundary			

Passing through the siding areas on the Kiel Canal

Signal		Meaning	Where can it be seen?
One quick flashing red light		No entry into the siding area	On the signal masts at the entrances to the sidings
Three interrupted red lights positioned above each other		No exit from the sidings for all vessels	On the signal masts in the sidings
One interrupted green light		Exit for all vessels	On the signal masts in the siding
Two isophase white lights		No exit from the sidings for category 1 and 2 vessels with a speed of less than 12 km/h	On the last (in the direction of travel) signal mast in the siding
Two fixed red lights positioned side by side		All vessels are prohibited from proceeding in Brunsbüttel inland port	On the signal masts of the oil terminal located on the north side

Daylight navigation hours (CET)

Add one hour during CEST

01 to 15 January	07:30 to 17:00 hrs
16 to 31 January	07:30 to 17:30 hrs
01 to 15 February	07:00 to 18:00 hrs
16 to 28/29 February	06:30 to 18:30 hrs
01 to 15 March	05:30 to 19:00 hrs
16 to 31 March	05:00 to 19:30 hrs
01 to 05 April	04:30 to 20:00 hrs
16 to 30 April	04:00 to 20:30 hrs
01 to 15 May	03:30 to 21:00 hrs
16 to 31 May	03:00 to 21:30 hrs
01 to 30 June	02:30 to 22:00 hrs
01 to 15 July	02:30 to 22:00 hrs
16 to 31 July	03:00 to 21:30 hrs
01 to 15 August	03:30 to 21:00 hrs
16 to 31 August	04:00 to 20:30 hrs
01 to 15 September	04:30 to 20:00 hrs
16 to 30 September	05:00 to 19:30 hrs
01 to 15 October	05:30 to 19:00 hrs
16 to 31 October	06:00 to 18:30 hrs
01 to 05 November	06:30 to 17:30 hrs
16 to 30 November	07:00 to 17:00 hrs
01 to 31 December	07:30 to 17:00 hrs



Canal dues

Transiting the Kiel Canal on recreational craft requires payment of a transit fee in accordance with the Regulation on Transit Fees for the Kiel Canal. Even for short trips through the canal a payment obligation exists. Climbing of the lock walls via the ladders installed in the lock chambers of Brunsbüttel and Kiel-Holtenau locks is prohibited. These ladders are for emergency and rescue purposes only. You cannot pay the transit fee in the lock chambers.

We offer the following options for paying the transit fees:

Kiel-Holtenau locks

Two pay machines:

- at the recreational craft berth west of Tiessenkai (possibility to pay transit and berth fees)
- near the inner waiting area at Kiel-Holtenau on the north side of the canal (at the floating landing stages)

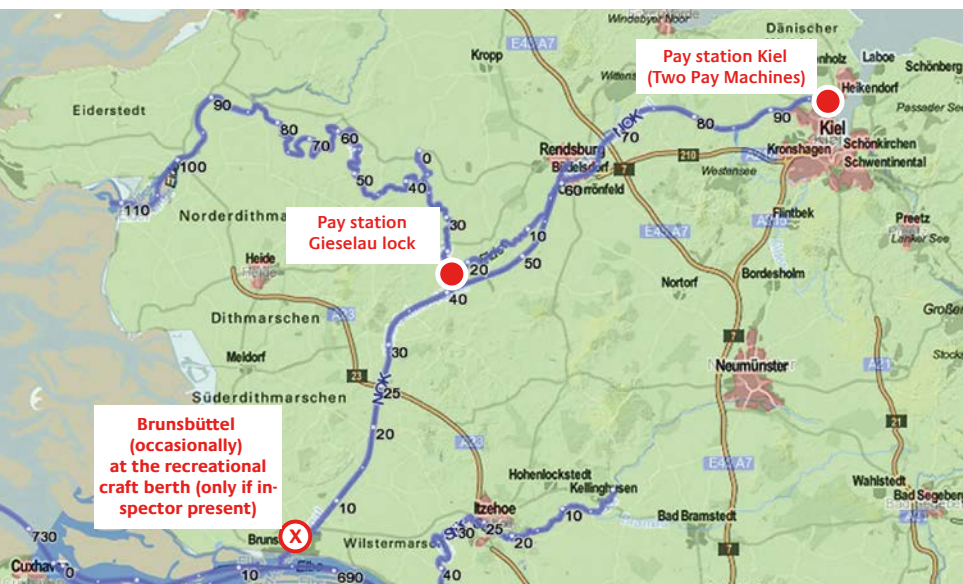
Gieselau lock

Payment to the lock keeper at Gieselau lock

Brunsbüttel (occasionally)

at the recreational craft berth inside the Kiel Canal (only if inspector is present)

Online at wsv.webshop.bund.de



Further information

Recreational craft with a length of 20 m or more must operate a class A or B AIS transponder during their passage through the canal. AIS transponders can be rented for passage through the canal at the entrance locks if necessary.

Recreational craft with a draught exceeding 3.1 m are subject to mandatory pilotage. Multi-hulled vessels used for recreational purposes are exempt from the mandatory pilotage requirement up to a total width of 12.0 m and a total length of 20.0 m.

For pleasure craft, the operation of self-steering devices is prohibited while navigating Kiel-Kanal waters.

It is prohibited to berth and moor recreational craft:

- at barrages, river control structures, fender piles, gauges, and fixed and floating aids to navigation;
- in the approach to the Old Lock in Brunsbüttel;
- at the dolphins in Kiel-Holtenau;
- on the embankments in the Kiel Canal and the Gieselau Canal;
- at the installations used by vessels belonging to the Federal Waterways and Shipping Administration. Nor may vessels be launched or placed in the water using these installations.

Current information:

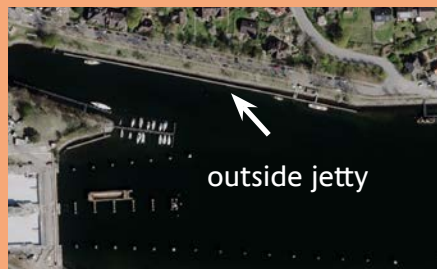
www.wsa-nord-ostsee-kanal.wsv.de

⇒Schifffahrt ⇒Sportschifffahrt

Because of the temporary closure for construction work of the Small Locks in Kiel-Holtenau, all recreational craft will be locked through the Large Chambers together with professional shipping.

Berth for recreational craft in Kiel-Holtenau:

The jetty is available as waiting area or overnight accommodation in accordance with an NOK-Transit.



Picture credits

Maps page 7: Map base © Federal Maritime and Hydrographic Agency Office (BSH)

Of all other pictures: Waterways and Shipping Office Kiel Canal

**Waterways and Shipping Office
Kiel Canal**

Ostermoorer Straße 18
25541 Brunsbüttel

Schleuseninsel 2
24159 Kiel

wsa-nord-ostsee-kanal@wsv.bund.de
www.wsa-nok.wsv.de



As at: July 2024

Set and printed by

Federal Maritime and Hydrographic
Agency (BSH)

This brochure is part of the public relations work of the Federal Waterways and Shipping Administration and is issued free of charge. It must not be used for the purpose of canvassing.

